

Datum: Schiedam, augustus 2025

Betreft: new alternator M3.28, M3.29

Productgroep: engine engines

Artikelcode: STM7437

Leverdatum:

New alternator

With the introduction of the new engine M3.29 (also for M3.28 engine) there has been introduced a new alternator with part number: 19-17663 (previously 08-01394)

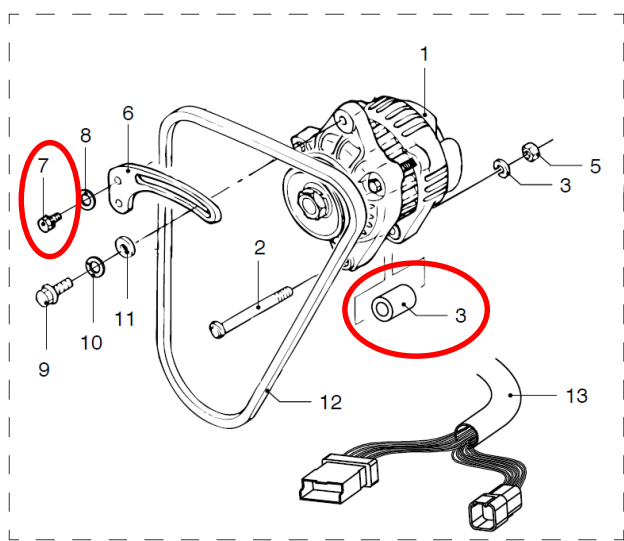
This part will also be used as a spare part which replaces the current alternator STM7437

The alternator differs from the old one but can be used to replace the STM7437 on the M3.28, M3.29 engines, however the wiring has to be modified for this purpose

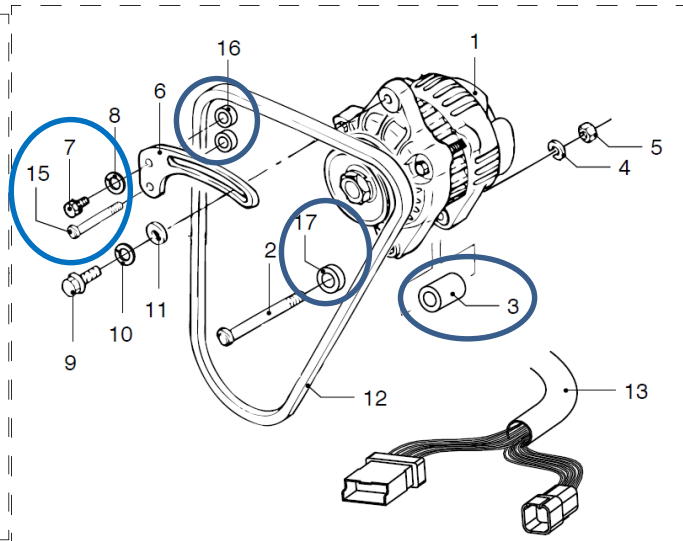
To replace the alternator on the M3.28, M3.29 engines, it is required to order an additional kit with items to fit the alternator correctly on the engine, the number of this kit is 08-013942

This set contains:

08-0188	1x
STM1030	1x
08-01497	1x
08-01389	2x
08-01390	1x
90° angle connector	1x



Mounting the STM7437



mounting the new alternator

Parts which will not be used anymore after conversion

nr 3 STM4537 will be replaced by 08-01388

nr 7 STM1024 will be replaced by STM1030

new parts which will be needed to fit the new alternator

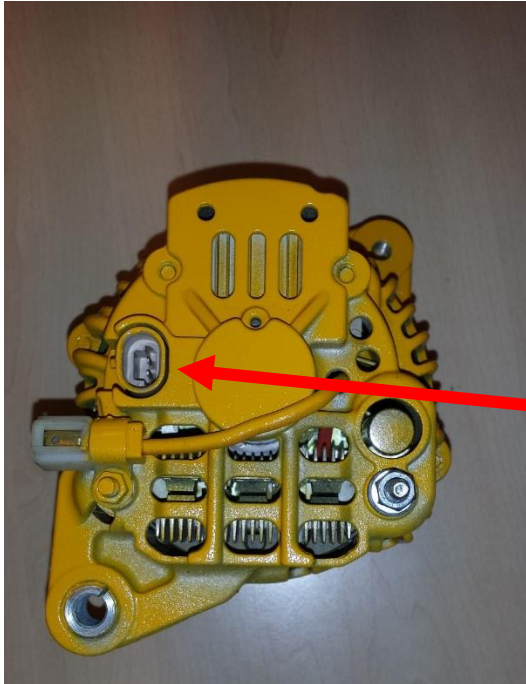
nr 15 08-01497 bolt M6x65

nr 16 08-01389 ring 16 mm

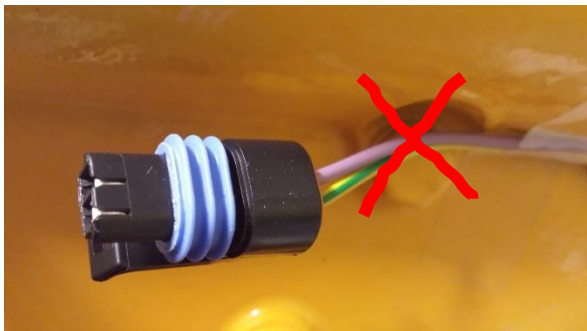
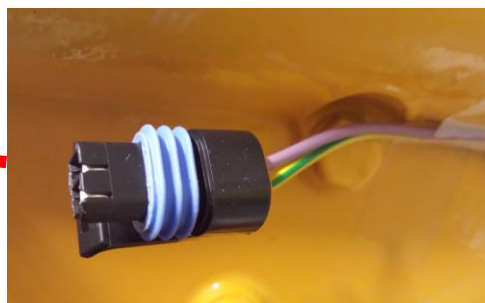
nr 17 08-01390 ring 20 mm

adaption of the wiring:

to accomodate the new alternator with the wiring you need to modify the wiring a little.



The STM 7437

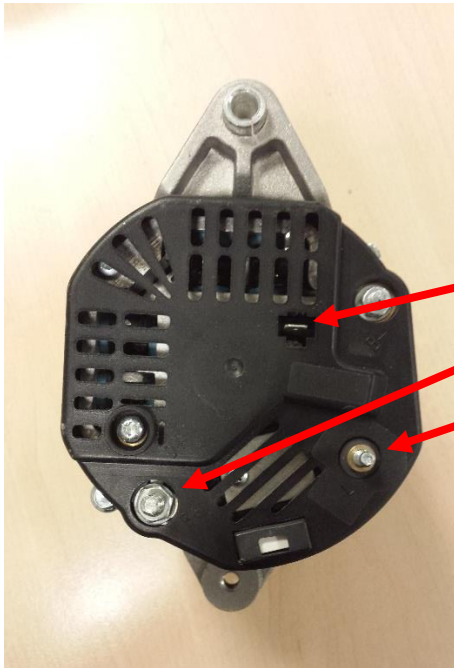


The connector for the warning light and the excitation have to be removed by cutting the connector of the wiring

The yellow/green wire have to get an 6 mm cable eye and the purple wire should be isolated (not to be used)



The mounted 6mm cable eye and the blinded purple cable



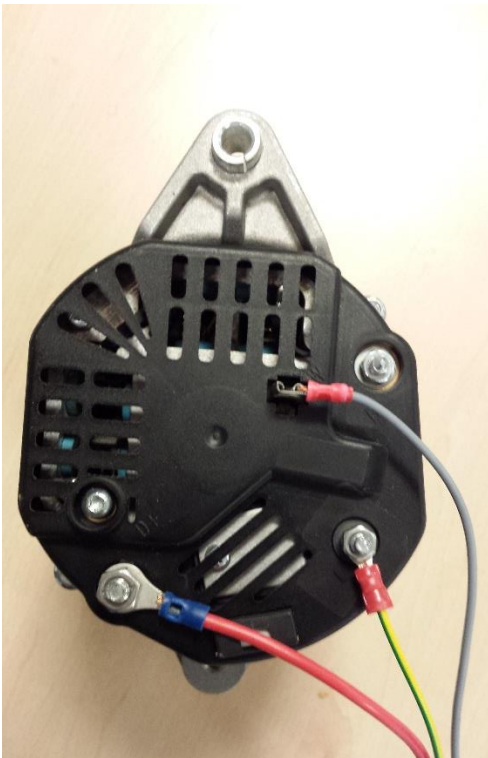
New alternator

W connection for the tachometer

B+ main + connector

L connection for the warning light

The W connection (grey wire) have to be fitted with a 90° angle connector (in the kit)
The green/yellow wire connects to the L connector of the alternator
The red thick wire is for the B+ main connector



Connected alternator