

EU DECLARATION OF CONFORMITY

Product(s)	Description	
PROJMXVLU	Custom hatch	Types: LIBERO, MAGNUS, ALTUS, PLANUS, FGH
PROJMXFBH	Custom hatch	Type: FBH

VETUS B.V. (manufacturer) hereby declares, under its sole responsibility, that the above products comply with the following relevant legislation:

EU legislation	Details
Directive 2013/53/EU	Recreational craft and personal watercraft requirements
Conformity assessment module(s)	B
EU notified body	0613 - Dutch Certification Institute
Certificate number(s)	DCI-CE-2013-53-EU-1745-01, DCI-CE-2013-53-1741-01, DCI-CE-2013-53-1743-00, DCI-CE-2013-53-EU-1746-01, DCI-CE-2013-53-EU-1755-01, DCI-CE-2013-53-EU-1588-01, DCI-CE-2013-53-1739-00, DCI-CE-2013-53-2114-00, DCI-CE-2013-53-1740-00, DCI-CE-2013-53-1739-00, DCI-CE-2013-53-1769-00

Used (harmonised) standard(s)

ISO 12216 Small craft - Windows, portlights, hatches, deadlights and doors - Strength and watertightness requirements

Additional information

The customer/end-user is obliged to take into account the project specific requirements for, but not limited to, glass thickness and application location area. Upon fulfilling all relevant ISO standard requirements, the glazing product, when correctly installed, complies with ISO 12216.

VETUS B.V.

Fokkerstraat 571
3125 BD Schiedam
The Netherlands

www.vetus.com

Signed for and on behalf of VETUS B.V.

Schiedam, April 15, 2024

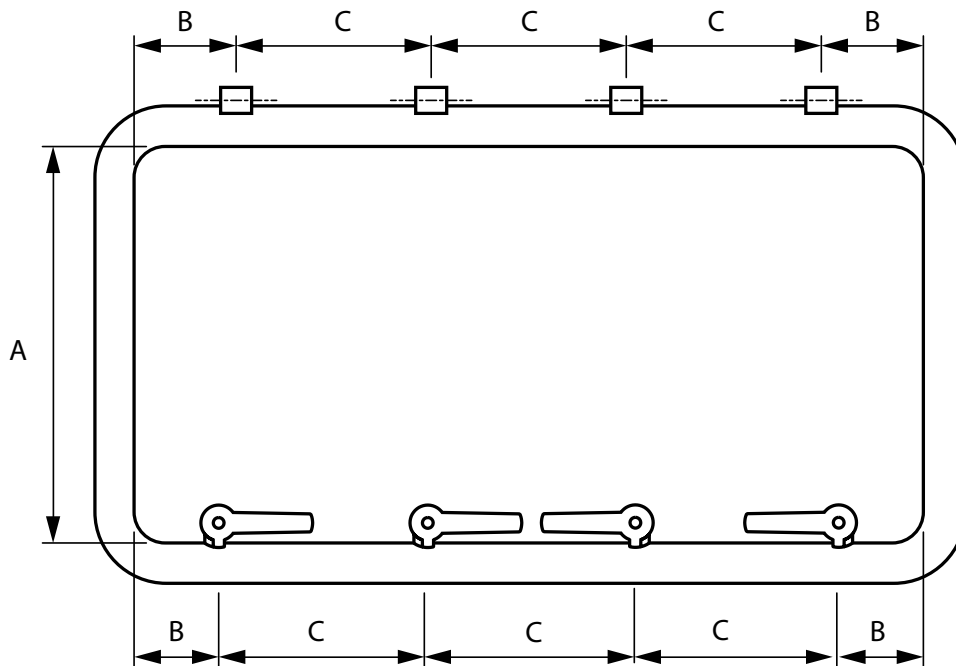
J.A. Boonstra



Project Manager Regulatory Compliance, R&D Department

DECLARATION OF CONFORMITY - ANNEX I

Conditions of construction



Product	A [mm] Maximum	B [mm] Maximum	C [mm] Maximum
MAGNUS hatch	630	100	200
LIBERO hatch	620	100	500
ALTUS hatch	630	150	500
PLANUS hatch	470	120	300
FGH(F) hatch	630	150	500
FBH hatch	630	150	500