

## EU DECLARATION OF CONFORMITY

Product(s)	Description	Design category/Area	Type
PROJMXVLU	Custom hatch	A/I	MAGNUS (*)
		A/II	LIBERO, ALTUS, PLANUS
PROJMXFBH	Custom hatch	A/II	FGH, FBH

VETUS B.V. (manufacturer) hereby declares, under its sole responsibility, that the above products comply with the following relevant legislation:

EU legislation	Details
Directive 2013/53/EU	Recreational craft and personal watercraft requirements
Conformity assessment module(s)	B
EU notified body	0613 - Dutch Certification Institute
Certificate number(s)	DCI-CE-2013-53-EU-1745-01, DCI-CE-2013-53-1741-01, DCI-CE-2013-53-1743-00, DCI-CE-2013-53-EU-1746-01, DCI-CE-2013-53-EU-1755-01, DCI-CE-2013-53-EU-1588-01, DCI-CE-2013-53-1739-00, DCI-CE-2013-53-2114-00, DCI-CE-2013-53-1740-00, DCI-CE-2013-53-1739-00, DCI-CE-2013-53-1769-00

### Used (harmonised) standard(s)

ISO 12216 Small craft - Windows, portlights, hatches, deadlights and doors - Strength and watertightness requirements

### Additional information

The customer/end-user is obliged to take into account the project specific requirements for, but not limited to, glass thickness and application location area. Upon fulfilling all relevant ISO standard requirements, the glazing product, when correctly installed, complies with ISO 12216.

(\*) VETUS strongly advises against the use of a MAGNUS hatch (e.g. as AI escape hatch) in the underside of a multihull. Due to the flexible nature of this type of craft, watertightness cannot be guaranteed unless the hatch is installed on a flat and non-flexible structure.

### VETUS B.V.

Havenstraat 11  
3115 HC Schiedam  
The Netherlands

[www.vetus.com](http://www.vetus.com)

### Signed for and on behalf of VETUS B.V.

Schiedam, June 5, 2025

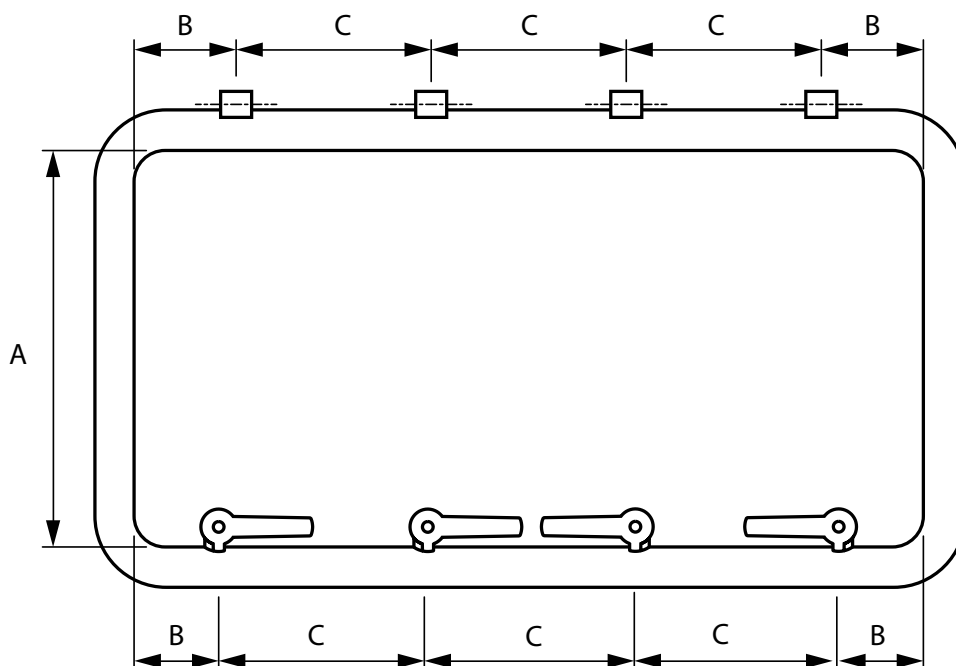
J.A. Boonstra



Project Manager Regulatory Compliance, R&D Department

## DECLARATION OF CONFORMITY - ANNEX I

### Conditions of construction



Product	A [mm] Maximum	B [mm] Maximum	C [mm] Maximum
MAGNUS hatch	630	100	200
LIBERO hatch	620	100	500
ALTUS hatch	630	150	500
PLANUS hatch	470	120	300
FGH(F) hatch	630	150	500
FBH hatch	630	150	500