

Datum: Schiedam 16th december 2015
Betreft: new alternator M3.28 engine
Productgroep: engines
Artikelcode: STM7437
Leverdatum: july 2015

New alternator

With the introduction of the new engine M3.29 there has been introduced a new alternator with partnumber 08-01394

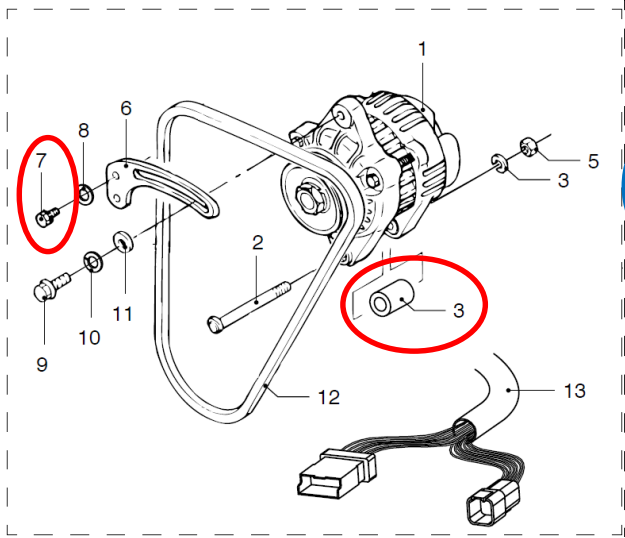
This part will also be used as a spare part which replaces the current alternator STM7437

The alternator differs from the old one but can be used to replace the STM7437 on the M3.28 engines, however the wiring have to be modified for this purpose

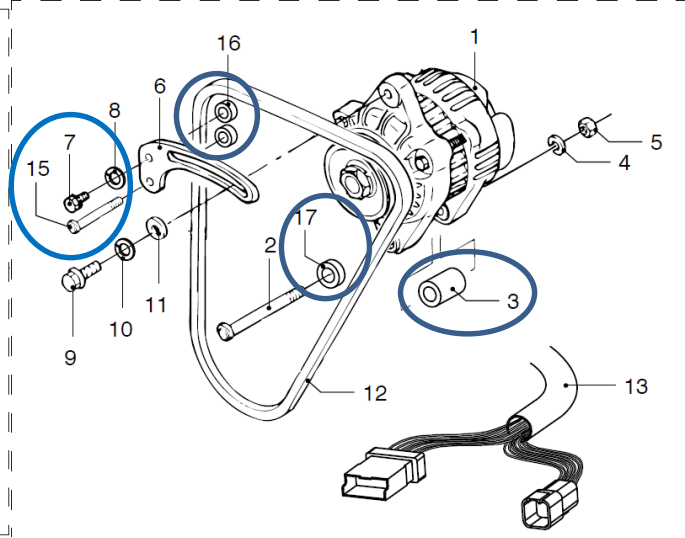
To replace the alternator on the M3.28 engines it is required to order an additional kit with items to fit the alternator correctly on the engine, the number of this kit is 08-013942

This set contains:

08-0188 1x
STM1030 1x
08-01497 1x
08-01389 2x
08-01390 1x
90° angle connector 1x



Mounting the STM7437



mounting the 08-01394

Parts which will not be used anymore after conversion

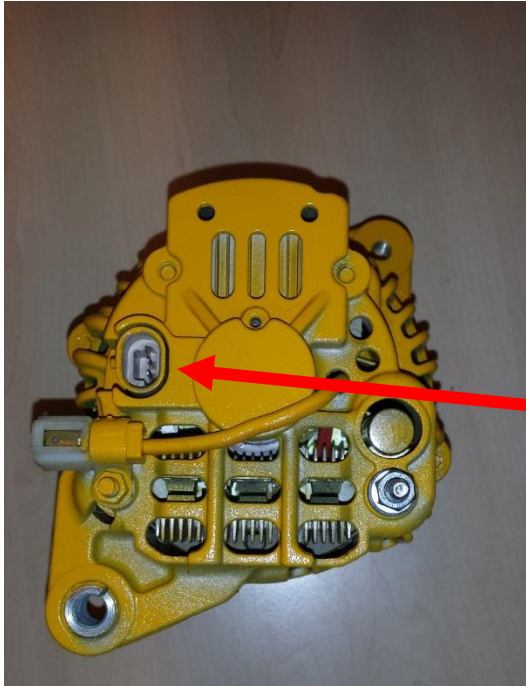
- nr 3 STM4537 will be replaced by 08-01388
- nr 7 STM1024 will be replaced by STM1030

new parts which will be needed to fit the new alternator

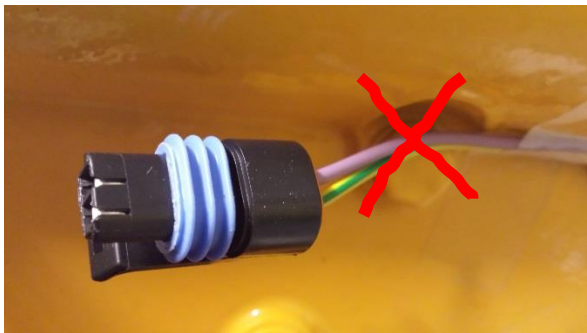
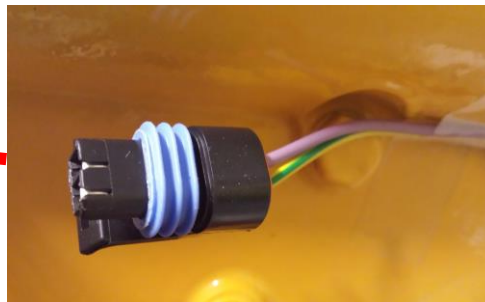
- nr 15 08-01497 bolt M6x65
- nr 16 08-01389 ring 16 mm
- nr 17 08-01390 ring 20 mm

adaption of the wiring:

to accomodate the new alternator with the wiring you need to modify the wiring a little.

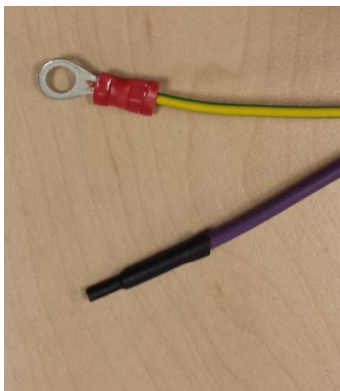


The STM 7437



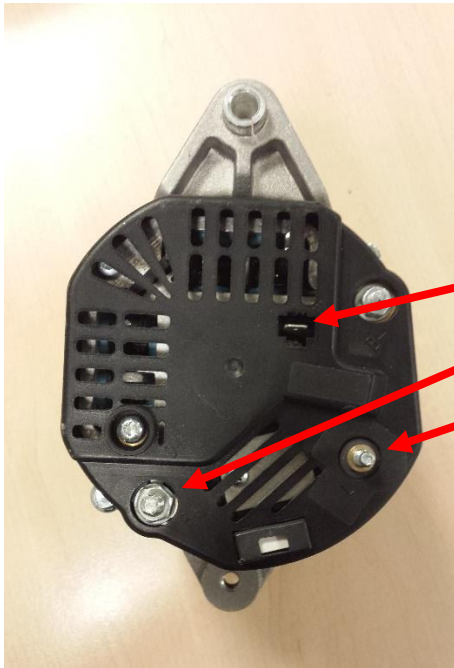
The connector for the warning light and the excitation have to be removed by cutting the connector of the wiring

The yellow/green wire have to get an 6 mm cable eye and the purple wire should be isolated (not to be used)



The mounted 6mm cable eye and the blinded purple cable

08-01394

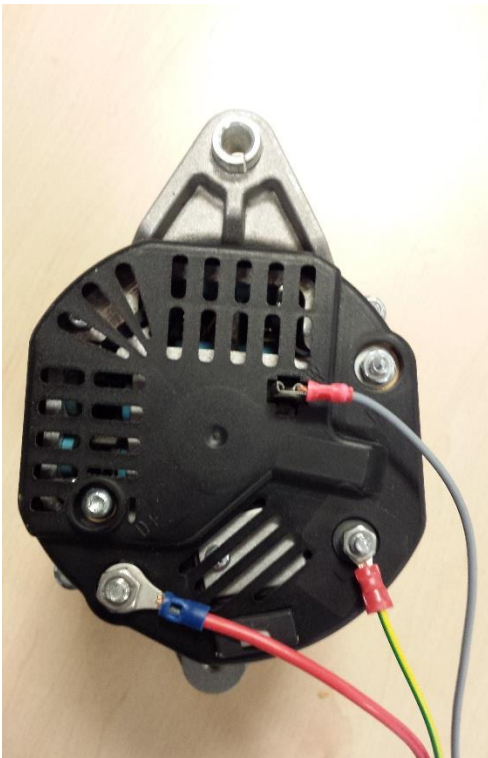


W connection for the tachometer

B+ main + connector

L connection for the warning light

The W connection (grey wire) have to be fitted with a 90° angle connector (in the kit)
The green/yellow wire connects to the L connector of the alternator
The red thick wire is for the B+ main connector



Connected alternator